

RUSSIAN EQUITY AND BOND INDICES

(August 26 - 30, 2013)

Index	Value 30.08.2013	Return over the period. %			
		Week	Month	Quarter	Year
Composite Indices					
MICEX Index	1,364.65	-2.05%	-1.63%	0.25%	-4.56%
RTS Index	1,290.96	-3.01%	-2.67%	-4.40%	-6.74%
Blue Chip Index	9,208.07	-1.98%	-1.77%	0.01%	-5.98%
Second-Tier Index	3,011.90	-3.23%	0.95%	-2.10%	-10.31%
Broad-Market Index	966.23	-2.07%	-1.62%	0.22%	-4.88%
Sectoral Indices (in RUB)					
Oil & Gas	3,248.69	0.24%	0.99%	8.91%	5.72%
Electric Utilities	1,141.91	-5.82%	-5.98%	-8.11%	-32.13%
Consumer goods & Retail	5,678.37	-0.28%	-2.05%	-2.08%	16.79%
Telecommunication	2,158.78	-6.06%	-2.54%	7.65%	1.27%
Industrials	1,783.14	-4.14%	-2.10%	5.44%	-1.00%
Financials	4,450.57	-0.92%	0.14%	2.03%	-7.86%
Chemicals	6,019.98	-1.66%	-1.59%	-19.41%	-24.00%
Metals & Mining	2,102.15	-2.14%	0.34%	-1.67%	-23.04%
Thematic indices					
MICEX-10 Index	2,974.70	-1.83%	-2.14%	-2.81%	-9.81%
Russian Volatility Index	22.95	9.29%	-5.59%	-9.54%	-32.44%
MICEX Innovation Index	424.00	-3.92%	-5.54%	2.02%	-32.54%
RTS Siberia Index	453.31	-2.69%	-0.13%	-4.65%	-28.43%
Currency (CBR)					
USD / RUB	33.18	-0.04%	0.98%	5.26%	3.38%

Over the week of August 26 - 30, 2013 the Moscow Exchange Indices reflected the negative trend on the Russian stock market. The MICEX Index was down 2.05% to 1,364.65 (1,393.21 as of August 23, 2013) and the dollar-denominated RTS Index fell by 3.01% to 1,290.96 (1,330.99 as of August 23, 2013).

The US dollar depreciated by 0.04% against the ruble last week.

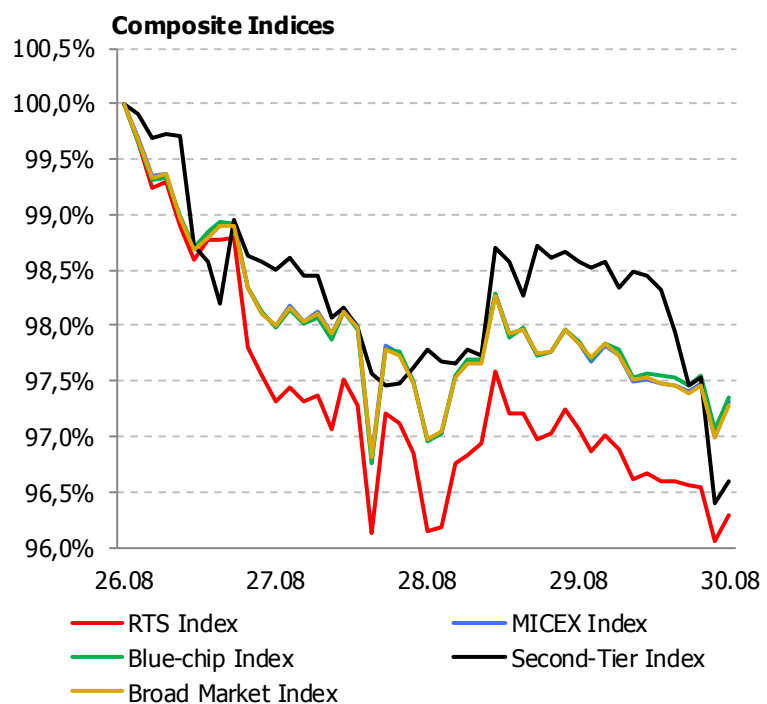
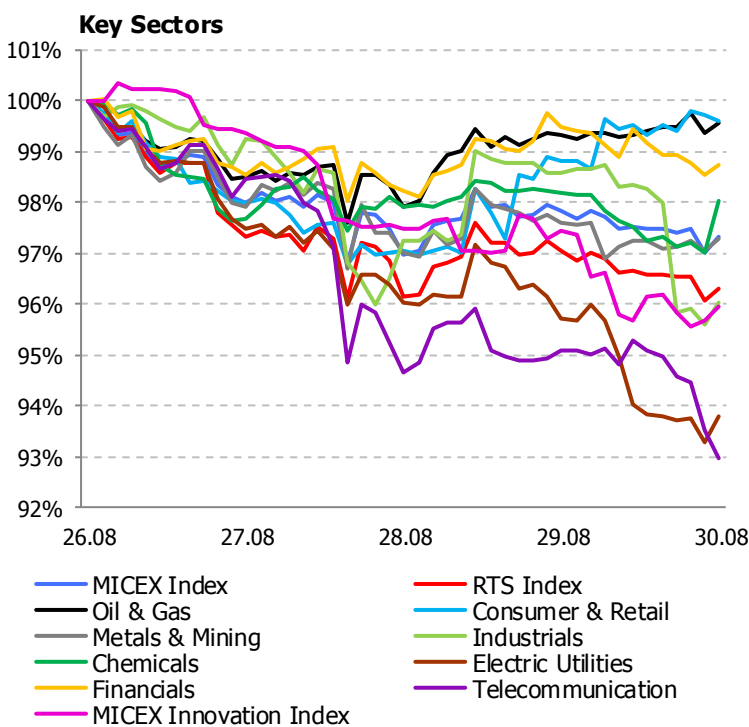
The stock market volatility increased last week with the Russian Volatility Index rising by 9.29% to 22.95 (21.00 as of August 23, 2013).

Last week most of the key economic sectors represented on the Russian stock market behaved negatively. The largest downturn was reported by the telecommunication with the relevant sector index falling by 6.06%. A significant decrease was also shown by the electric utilities and the industrials with the relevant sector indices being down 5.82% and 4.14% respectively. The upturn was reported by the oil and gas (+0.24%).

The MICEX Innovation Index lost 3.92% to 424.00 (441.30 as of August 23, 2013).

The Blue-Chip Index decreased by 1.98% to 9,208.07 (9,393.84 as of August 23, 2013).

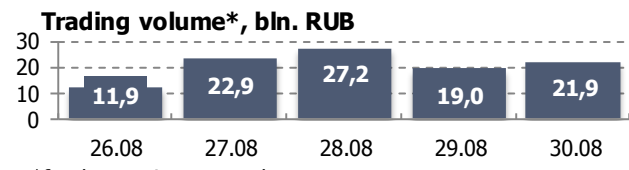
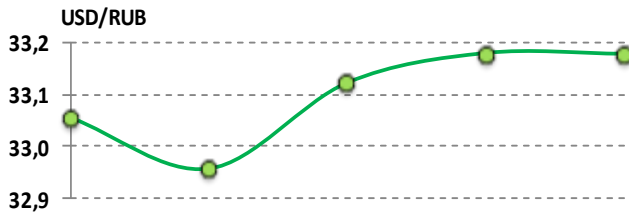
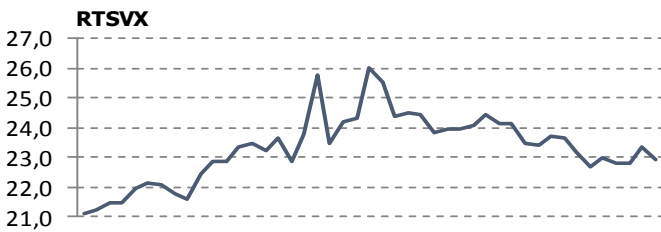
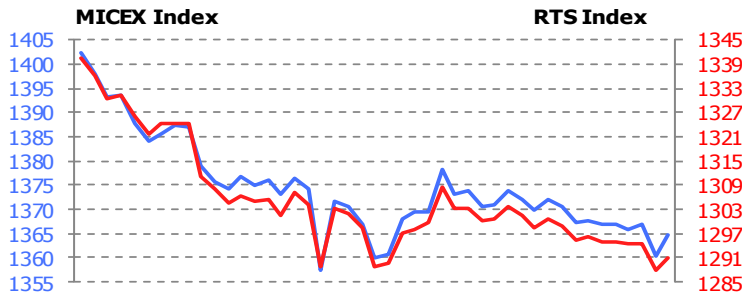
The Second-Tier Index depreciated by 3.23% to 3,011.90 (3,112.59 as of August 23, 2013). The Broad Market Index lost 2.07% to 966.23 (986.70 as of August 23, 2013).



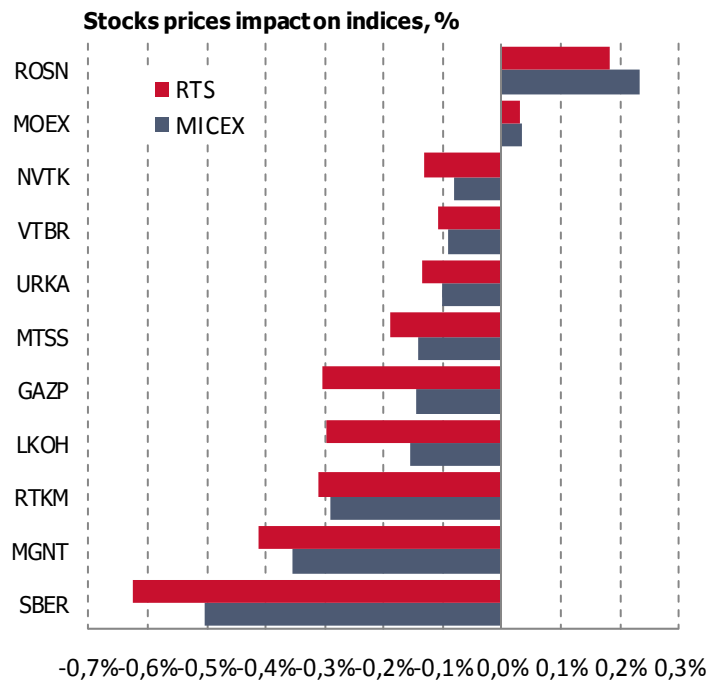
RUSSIAN EQUITY AND BOND INDICES

(August 26 - 30, 2013)

MICEX & RTS Indices, the main indices of the Moscow Exchange



*for the constituent stocks



Weekly impact on indices	Up	Down	Total influence. %
MICEX Index	+0.35%	-2.40%	-2.05%
RTS Index	+0.24%	-3.25%	-3.01%

Over the week of August 26 - 30, 2013 the Moscow Exchange Indices reflected the negative trend on the Russian stock market. The MICEX Index was down 2.05% to 1,364.65 (1,393.21 as of August 23, 2013) and the dollar-denominated RTS Index fell by 3.01% to 1,290.96 (1,330.99 as of August 23, 2013).

At the end of the week the MICEX Index was 1.63% lower than a month ago (1,387.31 as of July 30, 2013) and 4.56% lower than a year ago (1,429.82 as of August 30, 2012). The RTS Index was 2.67% lower than a month ago (1,326.41 as of July 30, 2013) and 6.74% lower than a year ago (1,384.26 as of August 30, 2012).

Last week's decrease of the RTS Index was accompanied by the increase of volatility levels, when the Russian Volatility Index RTSVX was up 9.29%.

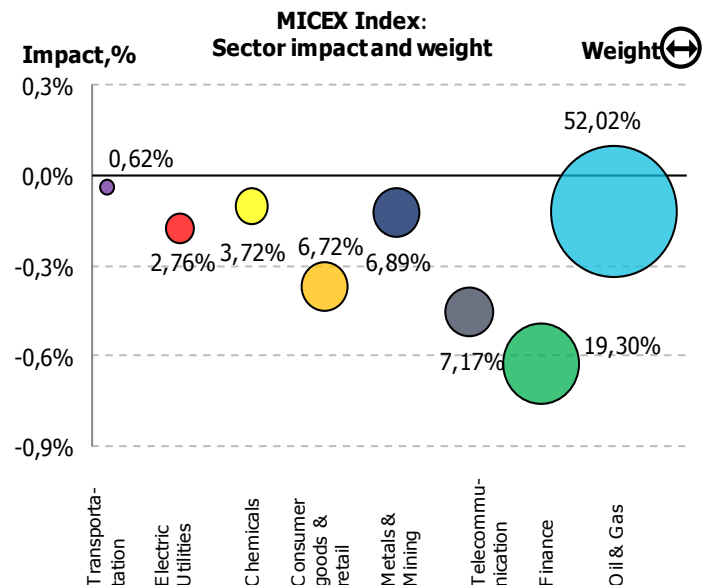
The most negative impact on the MICEX Index was mainly due to the falling prices for ordinary shares of Sberbank (-0.50%), OJSC «Magnit» (-0.35%) and OJSC «Rostelecom» (-0.29%).

Trading volume of securities included into the Moscow Exchange Indices' list of constituents amounted to RUB 102.94 billion, and the market capitalization of the Indices' constituents amounted to RUB 19,001.59 billion.

At the end of the week, 41 constituents of the MICEX Index list were pushing the Index down (-2.40%), while 9 securities behaved positively (+0.35%).

On the sector level, the major negative impact was made by the financials (-0.63%) and the telecommunication (-0.45%).

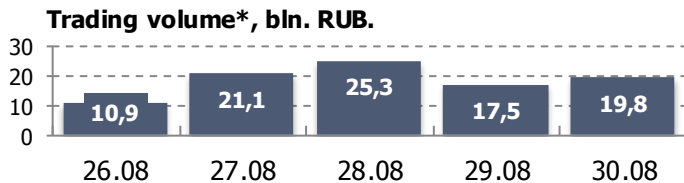
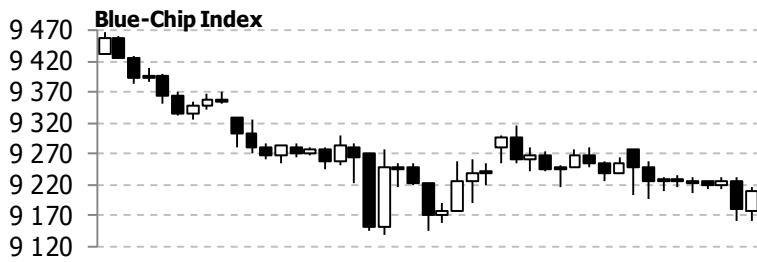
The oil & gas sector accounted for 52.02% of the MICEX Index total capitalization. The other large-weight sectors were the finance (19.30%) and the telecommunication (7.17%).



RUSSIAN EQUITY AND BOND INDICES

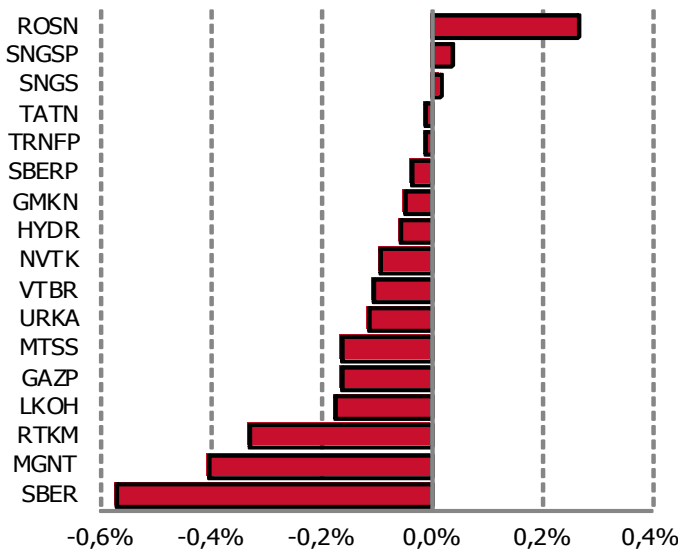
(August 26 - 30, 2013)

Blue Chip Index



*for the consistent stocks

Stocks prices impact on Blue Chip Index, %



For the week of August 26 - 30, 2013 the Blue Chip Index showed a negative trend.

The Blue Chip Index was down 1.98% to 9,208.07 (9,393.84 as of August 23, 2013). At the end of the week the Blue Chip Index was 1.77% lower than a month ago (9,374.28 as of July 30, 2013) and 5.98% lower than a year ago (9,793.88 as of August 30, 2012).

At the end of the week, 14 out of 17 securities included into Index list were pushing the Blue Chip Index down (-2.30%), while 3 shares behaved positively (+0.32%).

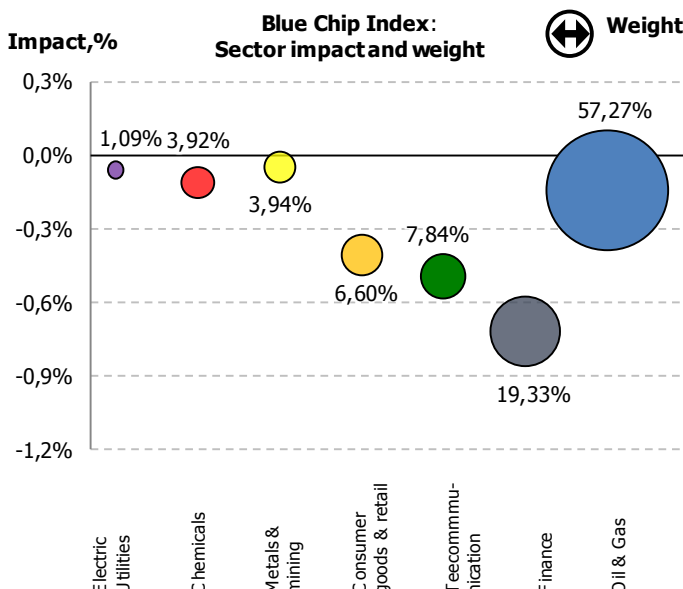
The most negative impact on the Blue Chip Index was mainly due to the falling prices for ordinary shares of Sberbank (-0.57%) and OJSC «Magnit» (-0.40%).

The most positive impact was due to the rising prices for ordinary shares of Rosneft (+0.26%) and preferred shares of «Surgutneftegas» OJSC (+0.04%).

The oil & gas sector accounted for 57.27% of the Blue Chip Index total capitalization. The other large-weight sectors were the finance (19.33%) and the telecommunication (7.84%).

Weekly price change	Up	Down	Unchanged	Total influence, %
Number of constituents	3	14	0	17
Influence, %	+0.32%	-2.30%	0%	-1.98%

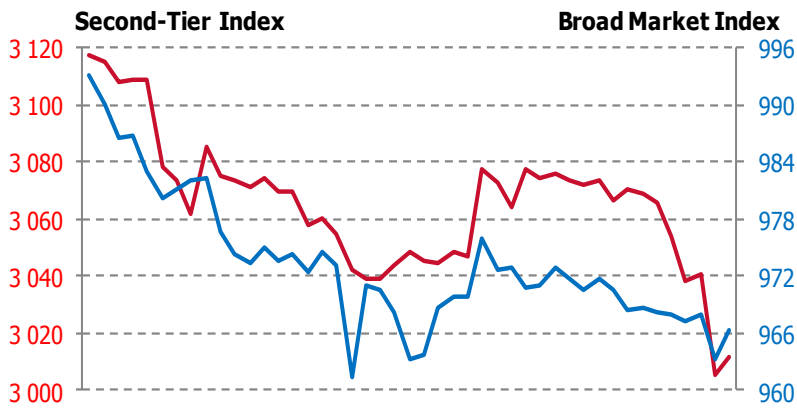
Code	Security name	Weight in Blue Chip Index	Weight in MICEX Index
GAZP	GAZPROM, Ordinary	18.43%	16.19%
GMKN	"OJSC "MMC "NORILSK NICKEL", Ordinary	3.94%	3.46%
HYDR	JSC "RusHydro", Ordinary	1.09%	0.96%
LKOH	AO "LUKOIL", Ordinary	16.23%	14.25%
MGNT	OJSC "Magnit", Ordinary	6.60%	5.80%
MTSS	MTS OJSC, Ordinary	5.46%	4.79%
NVTK	JSC "NOVATEK", Ordinary	5.55%	4.87%
ROSN	Rosneft, Ordinary	5.86%	5.15%
RTKM	Rostelecom, Ordinary	2.38%	2.09%
SBER	Sberbank, Ordinary	14.04%	12.33%
SBERP	Sberbank, Pref	1.08%	0.94%
SNGS	Surgutneftegas, Ordinary	4.05%	3.56%
SNGSP	Transneft, Pref	2.20%	1.93%
TATN	TATNEFT, Ordinary	2.72%	2.39%
TRNFP	Transneft, Pref	2.23%	1.96%
URKA	Uralkali, Ordinary	3.92%	3.44%
VTBR	JSC VTB Bank, Ordinary	4.21%	3.70%
Total		100.00%	87.81%



RUSSIAN EQUITY AND BOND INDICES

(August 26 - 30, 2013)

Broad Market and Second-Tier Indices



For the week of August 26 - 30, 2013 the Second-Tier Index depreciated by 3.23% to 3,011.90 (3,112.59 as of August 23, 2013). The Broad Market Index lost 2.07% to 966.23 (986.70 as of August 23, 2013).

At the end of the week the Second-Tier Index was 0.95% higher than a month ago (2,983.61 as of July 30, 2013) and 10.31% lower than a year ago (3,358.27 as of August 30, 2012).

The Broad Market Index was 1.62% lower than a month ago (982.12 as July 30, 2012) and 4.88% lower than a year ago (1,015.78 as of August 30, 2012).

At the end of the week, 40 securities included into the Second-Tier Index constituent list were pushing the Index down (-4.17%), while 8 securities behaved positively (+0.94%). The prices of two constituent stocks remained unchanged.

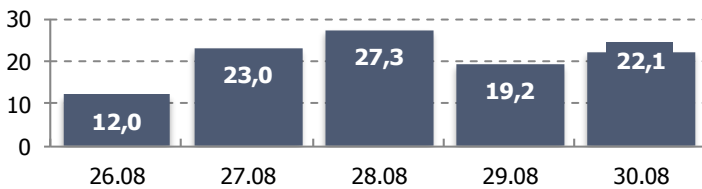
The most negative impact on the Second-Tier Index was due to the falling prices of JSC «TransContainer» (-1.16%) and JSC «OGK-2» (-0.36%).

The most negative impact on the Broad Market Index was mainly due to the falling prices for ordinary shares of Sberbank (-0.50%) and OJSC «Magnit» (-0.36%).

The most negative impact on the Second-Tier Index was mainly due to the falling prices for securities of the electric utilities (-1.58%) and the transportation (-1.15%).

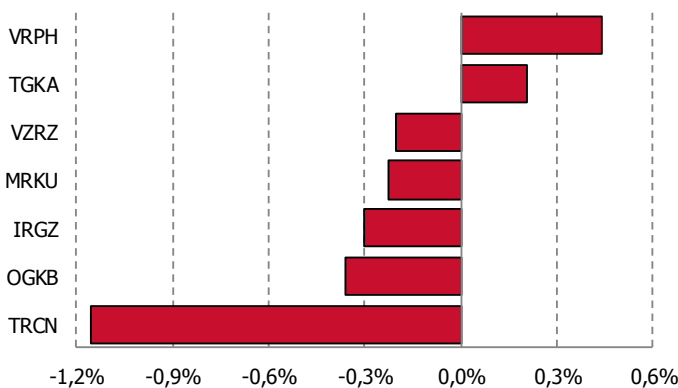
The electric utilities sector accounted for 35.99% of the Second-Tier Index total capitalization. The other large-weight sectors were the consumer goods & retail (19.08%) and the industrials (11.72%).

Trading volume*, bln. RUB .

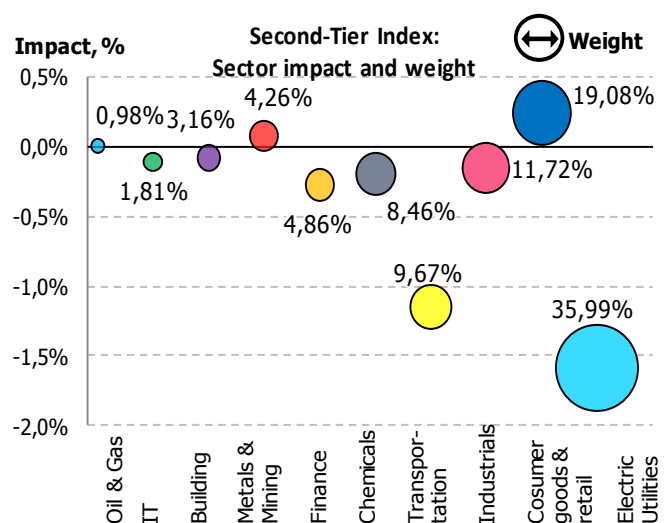
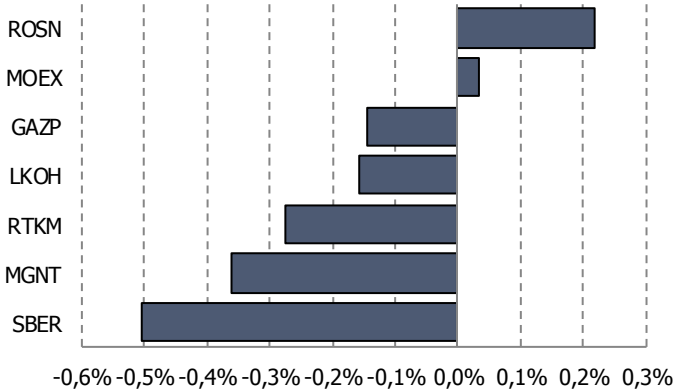


*for the constituent stocks

Stocks prices impact on Second-Tier Index, %



Stocks prices impact on Broad-Market Index, %

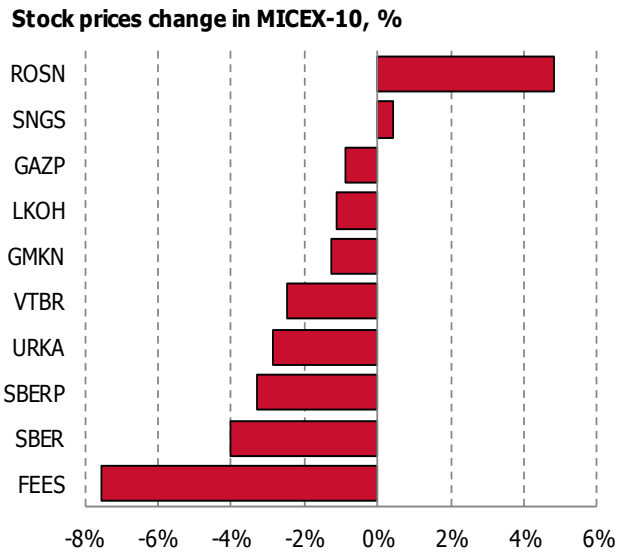
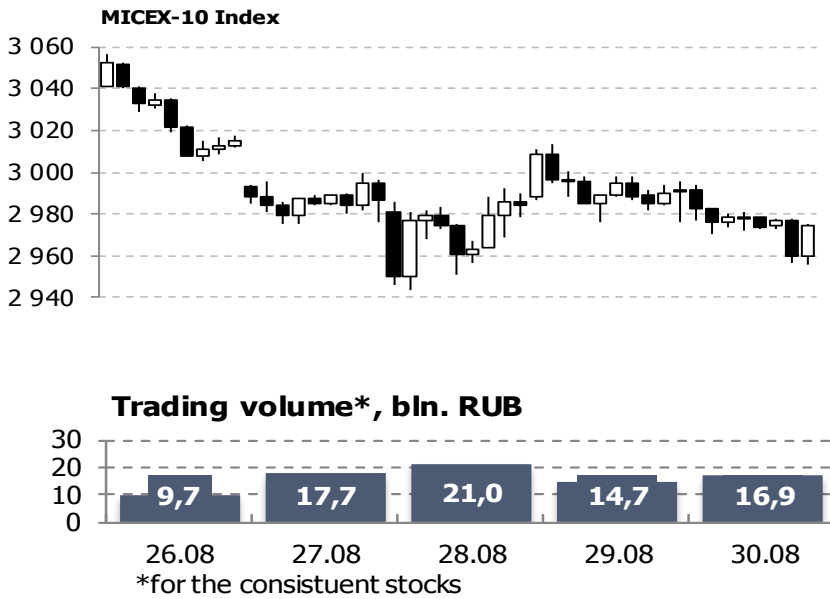


Weekly impact on indices	Up	Down	Total influence, %
Second-Tier Index	+0.94%	-4.17%	-3.23%
Broad Market Index	+0.36%	-2.43%	-2.07%

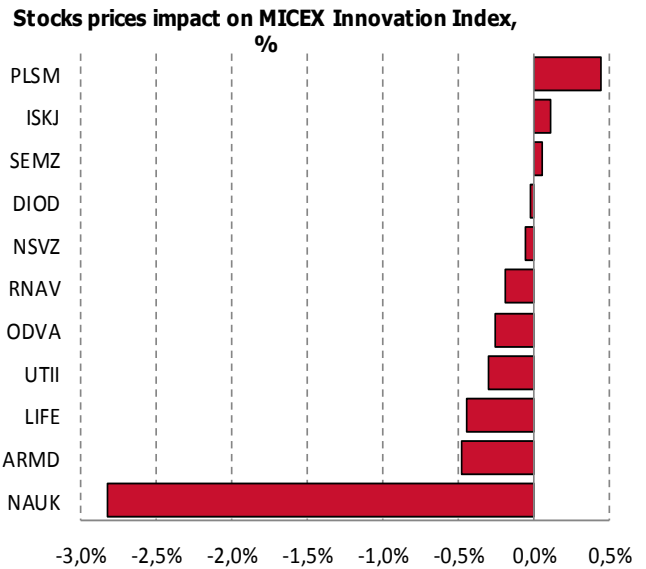
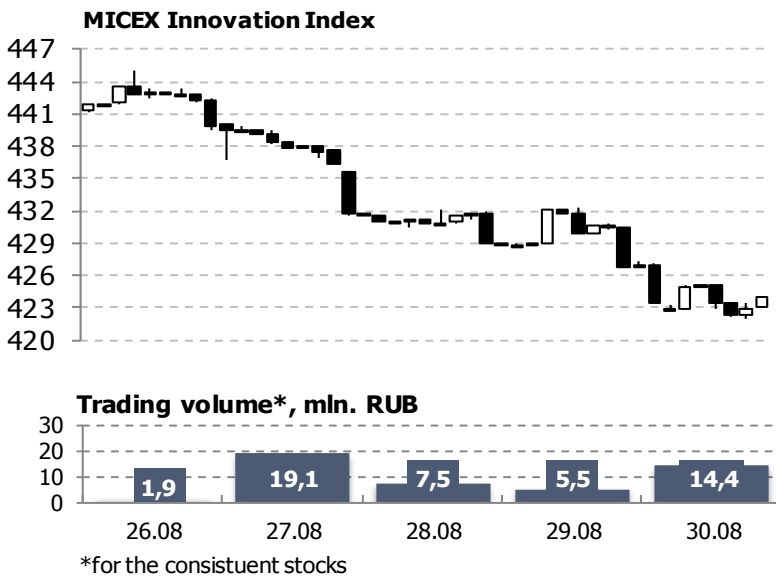
RUSSIAN EQUITY AND BOND INDICES

(August 26 - 30, 2013)

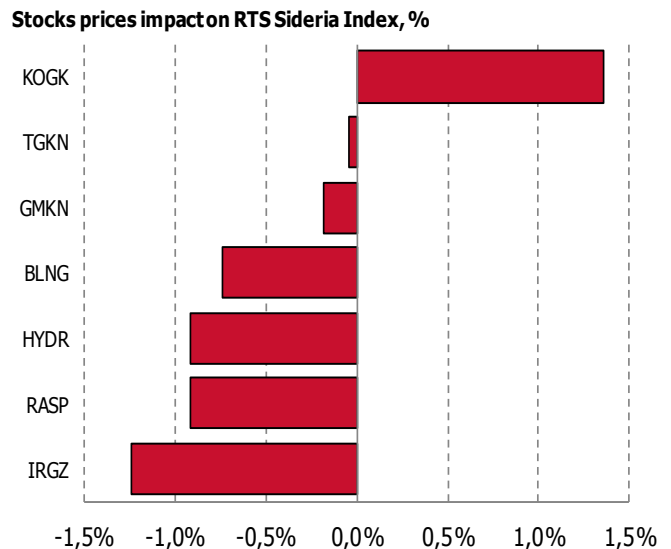
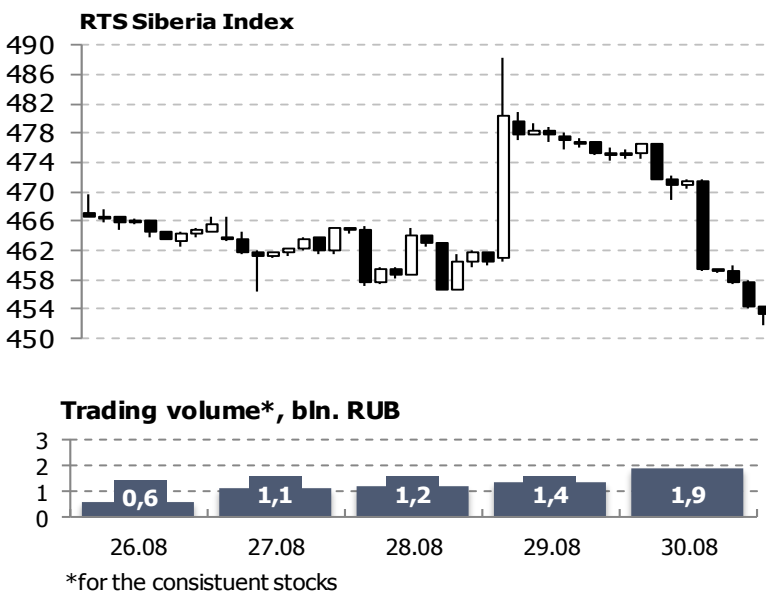
MICEX-10 Index



MICEX Innovation Index



RTS Siberia Index



RUSSIAN EQUITY AND BOND INDICES

(August 26 - 30, 2013)

Debt Market

Index	Value 30.08.2013	Return over the period			
		Week	Month	Quarter	Year
Russian Government Bond Indices					
RGBI	133.00	-0.13%	-1.12%	-2.31%	0.76%
RGBI-tr	316.37	0.01%	-0.52%	-0.47%	8.21%
Yield to maturity	7.35%	2 b.p.	19 b.p.	35 b.p.	-16 b.p.
Corporate Bond Indices					
MICEXCBICP	93.34	-0.01%	-0.03%	-0.16%	1.34%
MICEXCBITR	237.67	0.15%	0.64%	1.86%	9.62%
Yield to maturity	7.83%	0 b.p.	-12 b.p.	-12 b.p.	-85 b.p.
Municipal Bond Indices					
MICEXMBICP	97.15	-0.31%	-0.26%	-0.58%	1.09%
MICEXMBITR	175.15	-0.14%	0.45%	1.23%	8.88%
Yield to maturity	7.81%	6 b.p.	10 b.p.	15 b.p.	-56 b.p.
Pension Indices					
Conservative	1,586.50	0.20%	0.65%	1.83%	8.03%
Moderate	1,370.21	-0.63%	0.06%	0.51%	4.27%
Aggressive	1,164.48	-1.68%	-0.67%	-0.54%	0.47%
Equity Repo Rate indicators					
Overnight	6.19%	18 b.p.	8 b.p.	-5 b.p.	118 b.p.
1 week	7.19%	28 b.p.	103 b.p.	224 b.p.	279 b.p.
2 weeks	6.85%	15 b.p.	5 b.p.	143 b.p.	377 b.p.
Bonds Repo Rate indicators					
Overnight	6.11%	7 b.p.	-7 b.p.	-8 b.p.	74 b.p.
1 week	6.80%	26 b.p.	76 b.p.	20 b.p.	124 b.p.
2 weeks	6.99%	15 b.p.	31 b.p.	15 b.p.	92 b.p.

The Russian Government Bond Index (RGBI, total return) was down 0.13% to 133.00 last week (133.17 points as of August 23, 2013). The yield to maturity of the securities being the part of the calculation formula was up 2 basis points to 7.35%.

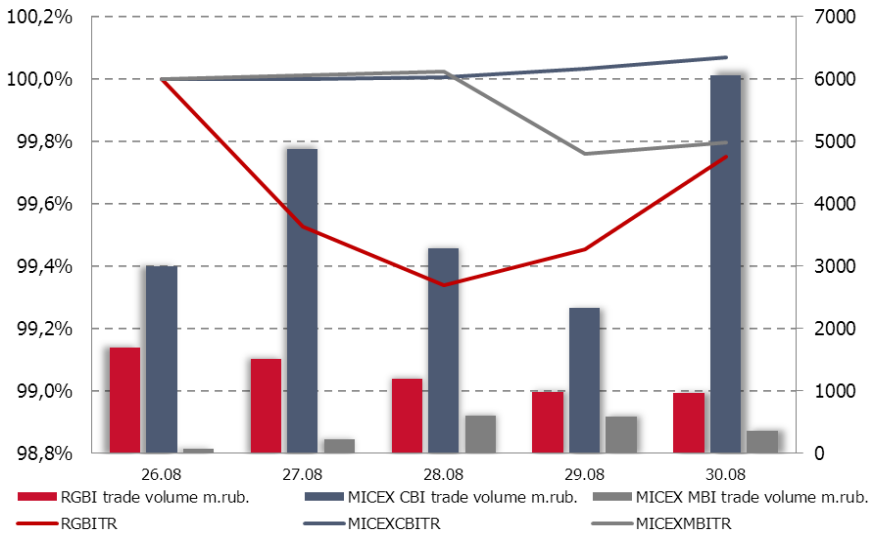
The Municipal Bond Index (MICEX MBI TR, total return) showed the negative trend and reached 175.15 points reducing by 0.14 basis points (175.40 as of August 23, 2013).

The total return value of the MICEX Corporate Bond Index (MICEX CBI TR) was up 0.15% to 237.67 points.

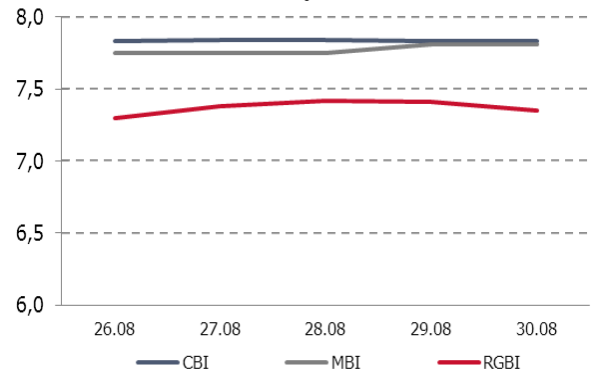
The conservative investment strategy tracking the last week's pension index could have resulted in a gain of 0.20% per week. The aggressive investment strategy based on the pension index could have brought a loss of 1.68% per week.

The bond overnight repo rate was up 7 basis points (from 6.04% to 6.11%). The equity overnight repo rate was equaled 6.19%.

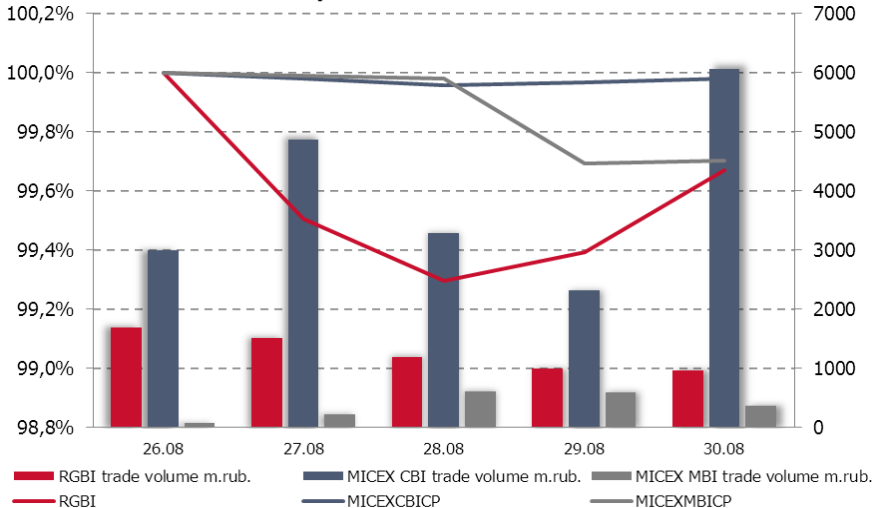
Total Return Indices dynamics



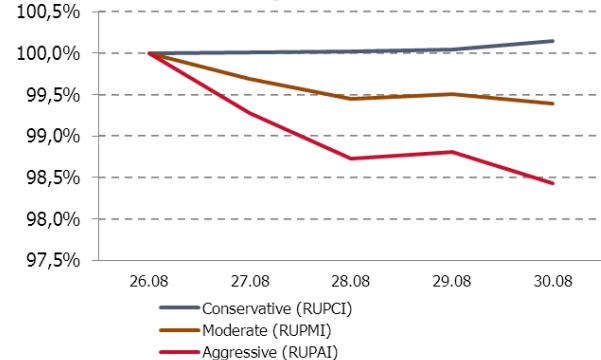
Indices Yield to maturity

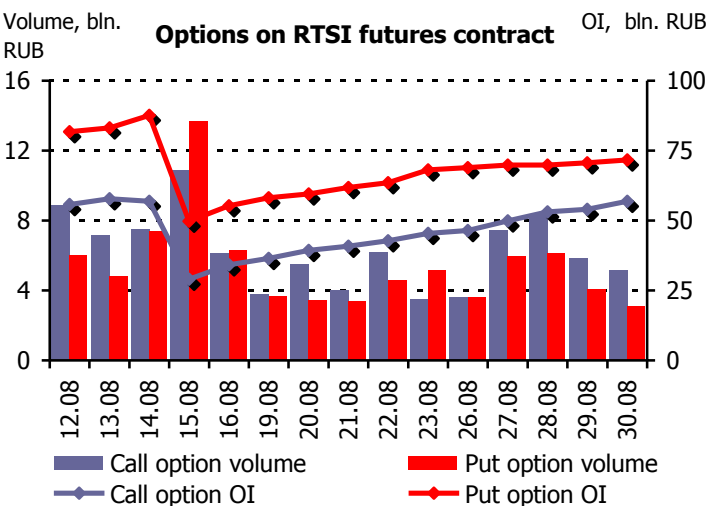
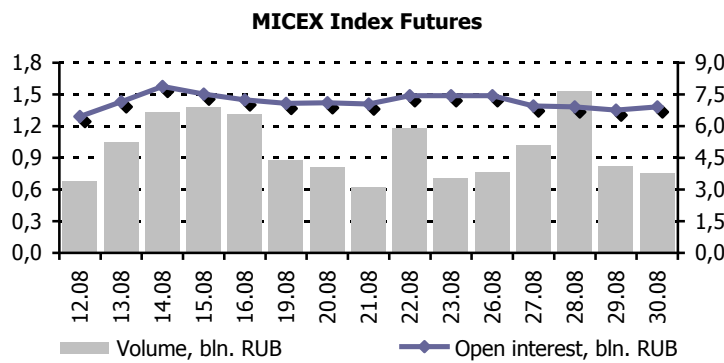
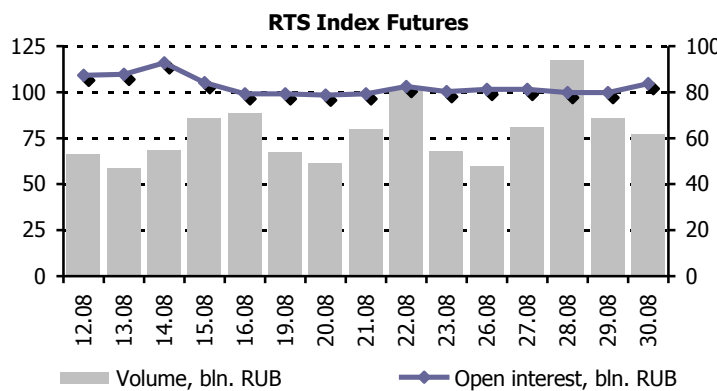
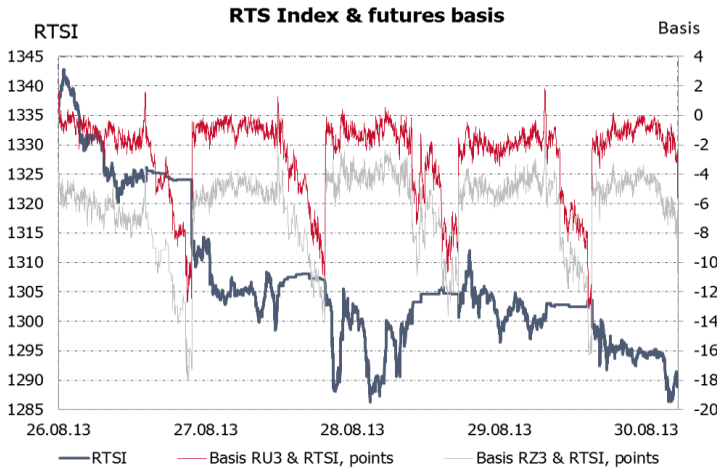


Clean Price indices dynamics



Pension indices dynamics





For the week of August 26 - 30, 2013 the total trading volume in index futures and options on the Moscow Exchange Derivatives Market equaled RUB 478.84 billion or 5.51 million contracts.

Last week's trading volume for the most liquid contract on FORTS, futures contract on the RTS Index, amounted to RUB 420.58 billion or 4.86 million contracts.

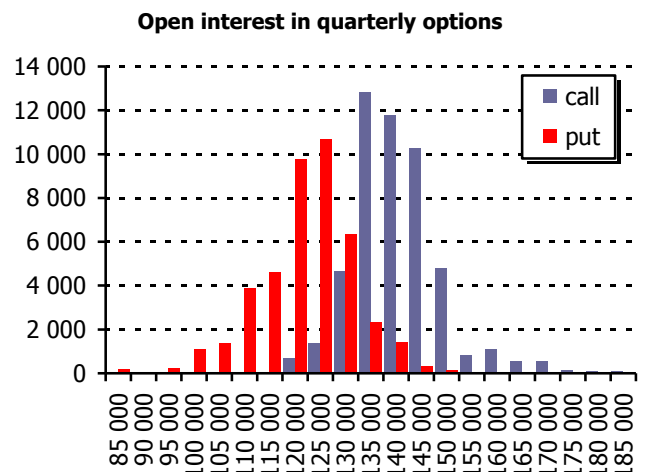
The RTS Index futures contract traded in backwardation last week. By the end of the week the RTS Index lost 3.01%, while the September and the December futures contracts down 3.32% and 3.38% respectively.

The total investor's open interest measured in RTS Index futures increased by 6.94%.

During the week the trading volume in futures contract on the MICEX Index was RUB 4.87 billion or 35.37 thousand contracts. Open interest in the MICEX Index futures decreased by 5.04%.

Trading volume in options on RTS Index futures totaled RUB 53.27 billion or 613.50 thousand contracts last week. Open interest of RUB 128.55 billion or 1.48 billion contracts was fixed. Put options made up 55.77% of the total open interest for these contracts. The 135.000 strike calls and 125.000 strike puts had the highest open interest.

The total investors' open interest measured in options on the RTS index futures increased by 12.13%.



(August 26 - 30, 2013)

The Moscow Exchange Indices are key indicators of the Russian organized market of securities and derivatives. The Indices refer to the type of the capitalization-weighted equity indices. The Indices calculation formula is based on the ratio of the total market capitalization of stocks included into the Index to the same indicator as of the Index inception date.

The MICEX and the RTS Indices are Russian stock market composite indices that include 50 most liquid stocks of the largest and most dynamically performing Russian issuers. The MICEX Index is calculated based on the stock prices denominated in RUB. The RTS Index is calculated based on the stock prices denominated in USD.

Sectoral Indices reflect the movements of prices in a given sector of the economy represented in the Russian stock market. They usually include 10 to 20 liquid shares of the most highly capitalized Russian issuers belonging to this sector.

MICEX O&G (RTSog) comprises stocks of oil & gas companies.

MICEX PWR (RTSeu) comprises stocks of utilities companies.

MICEX TLC (RTStl) comprises stocks of telecommunication companies.

MICEX M&M (RTSmm) comprises stocks of companies of metals and mining industry.

MICEX MNF (RTSin) comprises stocks of companies of manufacturing industry.

MICEX FNL (RTSfn) comprises stocks of banks and financial companies.

MICEX CGS (RTScr) comprises stocks of companies of consumer & retail sector.

MICEX CHM (RTSch) comprises stocks of companies of chemical industry.

Values of the sectoral indices are presented in rubles and in US dollars. Historical values of the MICEX sectoral indices are served as a history for ruble-denominated indices, whereas historical values of the RTS indices are used as a history for dollar-denominated indices.

The Blue Chip Index is an indicator that tracks performance of the blue chips. It is calculated from ruble-denominated prices and bids for 15 top liquid stocks of the Russian equity market.

The MICEX10 is a price equal-weighted index calculated as the average of price fluctuations of 10 most liquid stocks admitted to trading on the Exchange. The Index tracks the increase in the value of portfolio comprising 10 stocks with the same initial weights.

The Second-Tier Index is an indicator that tracks the performance of stocks issued by small cap and mid cap companies. The Index constituent list includes 50 securities ranked below the stocks with the largest capitalization (taking into account free-float) included into the MICEX Index and the RTS Index unified list of constituents. The Index is calculated based on the dollar-denominated and ruble-denominated stock prices.

The Broad Market Index includes the top 100 shares selected by the criteria of liquidity, capitalization and shares that are in free-float. The Index's list of securities is used as the basis for the constituent list of other indices of the Moscow Stock Exchange, e.g. where TOP-50 stock of the Broad Market Index list is an underlying for MICEX Index as well as for RTS Index and BOTTOM-50 of the Broad Market Index list is an underlying for the Second-Tier Index. Whole sectoral indices baskets compose the list of the Broad Market Index.

The MICEX Innovation Index is a capitalization-weighted price index comprised stocks of Russian companies traded on the Innovations and Investments Market.

Regional Indices are equity indices designed to include stocks admitted to trading in Moscow Exchange, selected on the basis of liquidity and capitalization with issuers operating primarily in the specific federal district of the Russian Federation. At the moment, the information on the RTS Siberia Index, with constituent stocks of companies from the Siberian Federal district, is available.

The Russian Volatility Index is an aggregated indicator which reflects the average value of implied volatility of the options on RTS Index futures contract. To calculate values of the Index the Black-Scholes option pricing formula is applied.

The Bond Indices are the family of MICEX Bond Indices consists of the Russian Government Bond Index (RGBI), MICEX Corporate Bond Index (MICEX CBI) and MICEX Municipal Bond Index (MICEX MBI). The Indices were designed to measure the performance of the various segments of the Russian bond market. The Bond Indices are calculated by three methods concurrently: "total return", "clean price" and "gross price" method. In addition, duration and yield to maturity are calculated based on the Indices constituent lists.

The repo rate indicators are calculated to evaluate Russian organized repo market condition. The Indicators are computed separately for the stock repo market and bond repo market. Trades in shares included in the MICEX Index constituent list and trades in bonds included in the Bank of Russia's Lombard list are used to calculate the Indicators. There are overnight, one-week and two-week repo rate indicators that are determined based on settlement periods of relevant repo transactions.

Moscow Exchange

Indices and Market Data Department
Bolshoy Kislovskiy per., 13
125009, Moscow, Russia

Phones: +7(495) 363 -3232 (ext. 24003)

Faxes: +7(495) 363 -3232 (ext. 22222)

E-mail: index@moex.com

RUSSIAN EQUITY AND BOND INDICES

(August 26 - 30, 2013)

The report has been prepared and issued by Moscow Exchange. This report has been prepared and issued by MOSCOW EXCHANGE (the "Company"). Unless otherwise stated, the Company is the source for all data contained in this document. Such data is provided as at the date of this document and is subject to change without notice.

This document does not constitute or form part of, and should not be construed as, an offer or invitation for the sale or subscription of, or a solicitation of any offer to buy or subscribe for, any securities, nor shall it or any part of it or the fact of its distribution form the basis of, or be relied on in connection with, any offer, contract, commitment or investment decision relating thereto, nor does it constitute a recommendation regarding the securities of the Company.

The information in this document has not been independently verified. No report or warranty, express or implied, is made as to, and no reliance should be placed on, the fairness, accuracy or completeness of the information or opinions contained herein. None of the Company, or any of its subsidiaries or affiliates or any of such person's directors, officers or employees, advisers or other representatives, accepts any liability whatsoever (whether in negligence or otherwise) arising, directly or indirectly, from the use of this document or otherwise arising in connection therewith.

This report includes forward-looking statements. All statements other than statements of historical fact included in this report, including, without limitation, those regarding our financial position, business strategy, management plans and objectives for future operations are forward-looking statements. These forward-looking statements involve known and unknown risks, uncertainties and other factors, which may cause our actual results, performance, achievements or industry results to be materially different from those expressed or implied by these forward-looking statements. These forward-looking statements are based on numerous assumptions regarding our present and future business strategies and the environment in which we expect to operate in the future. Important factors that could cause our actual results, performance, achievements or industry results to differ materially from those in the forward-looking statements include, among other factors:

- Perception of market services offered by the Company and its subsidiaries
- Volatility (a) of the Russian economy and the securities market and (b) sectors with a high level of competition that the Company and its subsidiaries operate
- Changes in (a) domestic and international legislation and tax regulation and (b) state policies related to financial markets and securities markets
- Competition increase from new players on the Russian market
- The ability to keep pace with rapid changes in science and technology environment, including the ability to use advanced features that are popular with the Company's and its subsidiaries' customers
- The ability to maintain continuity of the process of introduction of new competitive products and services, while keeping the competitiveness
- The ability to attract new customers on the domestic market and in foreign jurisdictions
- The ability to increase the offer of products in foreign jurisdictions

Forward-looking statements speak only as of the date of this report and we expressly disclaim any obligation or undertaking to release any update of, or revisions to, any forward-looking statements in this report as a result of any change in our expectations or any change in events, conditions or circumstances on which these forward-looking statements are based.