

RUSSIAN EQUITY AND BOND INDICES

(2 - 6 December 2013)

Index	Value 06.12.2013	Return over the period, %			
		Week	Month	Quarter	Year
Composite Indices					
MICEX Index	1,448.67	-2.07%	-3.42%	1.78%	0.70%
RTS Index	1,390.61	-0.88%	-4.68%	3.34%	-5.21%
Blue Chip Index	9,830.66	-2.32%	-3.75%	1.95%	0.11%
Second-Tier Index	3,016.00	2.43%	-0.23%	-1.16%	-6.69%
Broad-Market Index	1,024.75	-2.01%	-3.37%	1.72%	0.41%
Sectoral Indices (in RUB)					
Oil & Gas	3,354.10	-2.10%	-4.65%	-1.99%	4.61%
Electric Utilities	1,000.87	5.03%	-2.88%	-11.88%	-40.71%
Consumer goods & Retail	6,205.04	0.57%	1.77%	9.41%	31.79%
Telecommunication	2,315.23	0.87%	-5.77%	4.90%	12.28%
Industrials	1,809.99	-0.49%	-1.92%	-2.31%	-2.27%
Financials	5,037.02	-1.99%	1.83%	10.05%	12.27%
Chemicals	6,127.92	0.00%	-0.83%	0.23%	-23.02%
Metals & Mining	2,137.66	-1.64%	-1.78%	-0.92%	-24.01%
Transport	1,239.87	3.80%	2.02%	1.90%	13.32%
Thematic indices					
MICEX-10 Index	3,138.30	-1.28%	-2.89%	1.70%	-5.83%
Russian Volatility Index	23.39	3.96%	8.04%	10.91%	6.66%
MICEX Innovation Index	362.71	1.16%	-9.00%	-10.64%	-30.30%
RTS Siberia Index	430.04	0.98%	-7.53%	-7.35%	-31.23%
Currency (CBR)					
USD / RUB	33.11	-0.06%	2.36%	-0.83%	7.43%

Moscow Exchange's indices reflected the negative trend on the Russian stock market in the week to 6 December. The MICEX Index was down 2.07% to 1,448.67 (from 1,479.35 on 29 November), while the dollar-denominated RTS Index lost 0.88% to 1,390.61 (from 1,402.93).

The dollar depreciated 0.06% against the rouble.

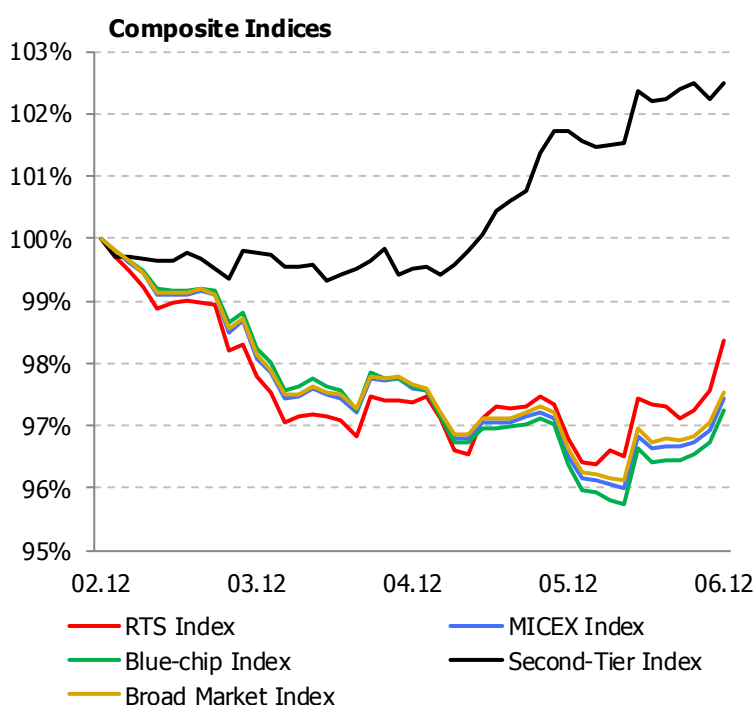
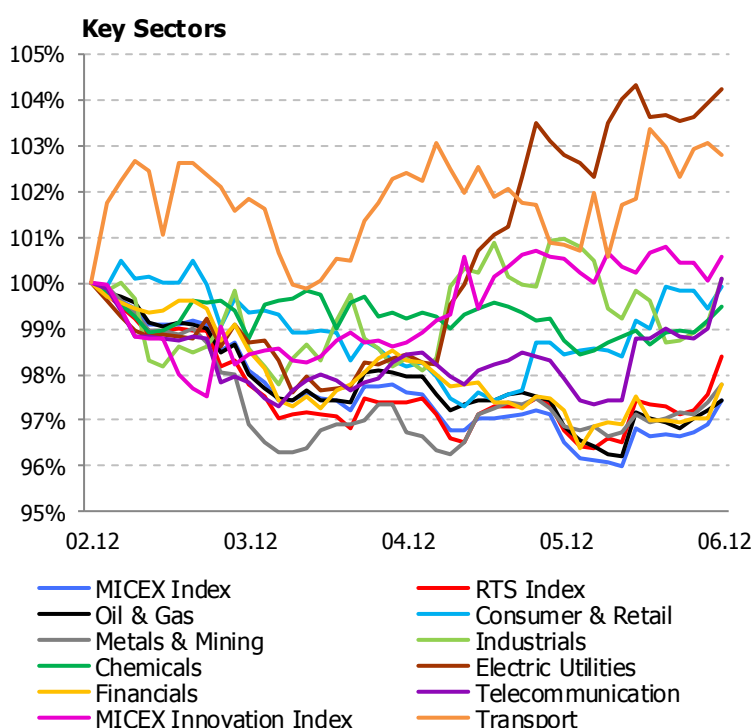
Volatility increased, with the Russian Volatility Index rising 3.96% to 23.39 (from 22.50).

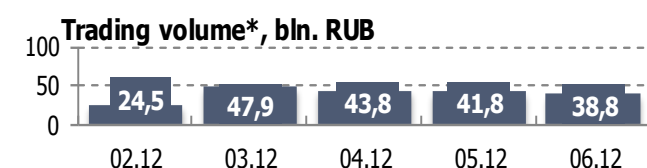
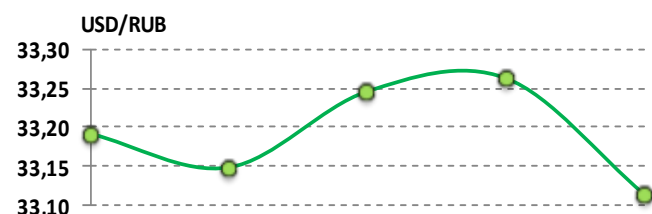
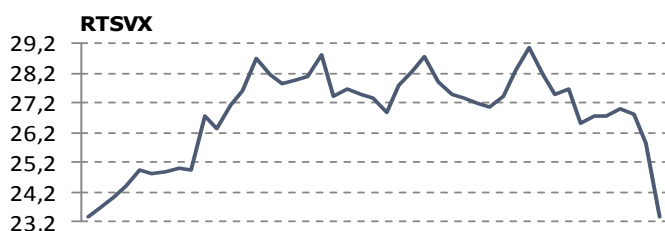
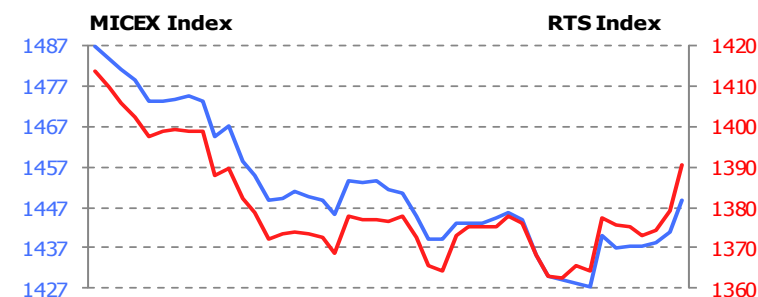
Most key sectors made losses. The largest downturn was in Oil and Gas, the sector index of which fell 2.10%. Financials and Metals and Mining climbed down a respective 1.99% and 1.64%. The largest gain in Electric Utilities is 5.03%.

The MICEX Innovation Index rose 1.16% to 362.71 (from 358.56).

The Blue Chip Index decreased 2.32% to 9,830.66 (from 10,064.13).

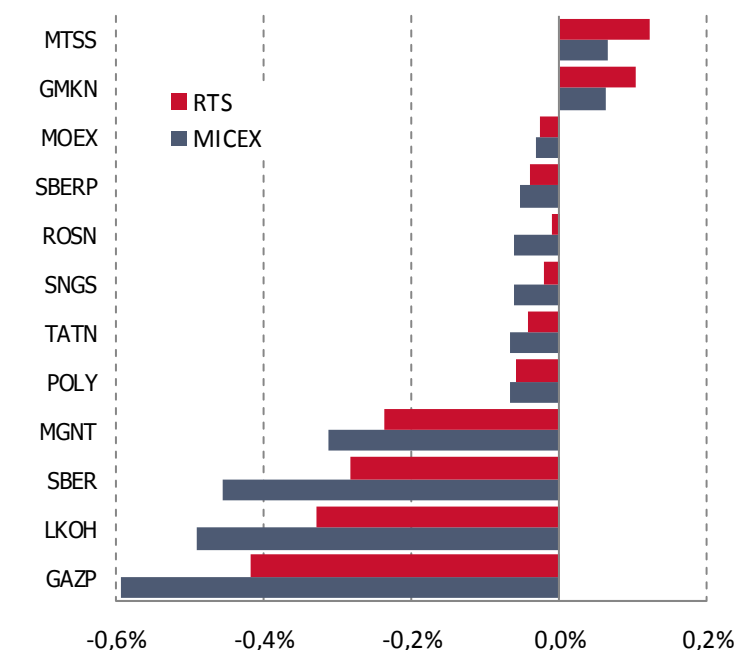
The Second Tier Index appreciated 2.43% to 3,016.00 (from 2,944.53). The Broad Market Index lost 2.01% to 1,024.75 (from 1,045.75).





*for the constituent stocks

Stock price influences on indices



Weekly impact on indices	Up	Down	Total influence. %
MICEX Index	+0.36%	-2.43%	-2.07%
RTS Index	+0.67%	-1.55%	-0.88%

Moscow Exchange's indices reflected the negative trend on the Russian stock market in the week to 6 December. The MICEX Index was down 2.07% to 1,448.67 (from 1,479.35 on 29 November), while the dollar-denominated RTS Index lost 0.88% to 1,390.61 (from 1,402.93).

The MICEX Index on 6 December was down 3.42% MoM (from 1,499.95) and up 0.70% YoY (from 1,438.54). The RTS Index was down 4.68% MoM (from 1,458.93) and off 5.21% YoY (from 1,467.00).

The RTS Index's decrease last week was accompanied by an increase in volatility, with the Russian Volatility Index (RTSVX) up 3.96%.

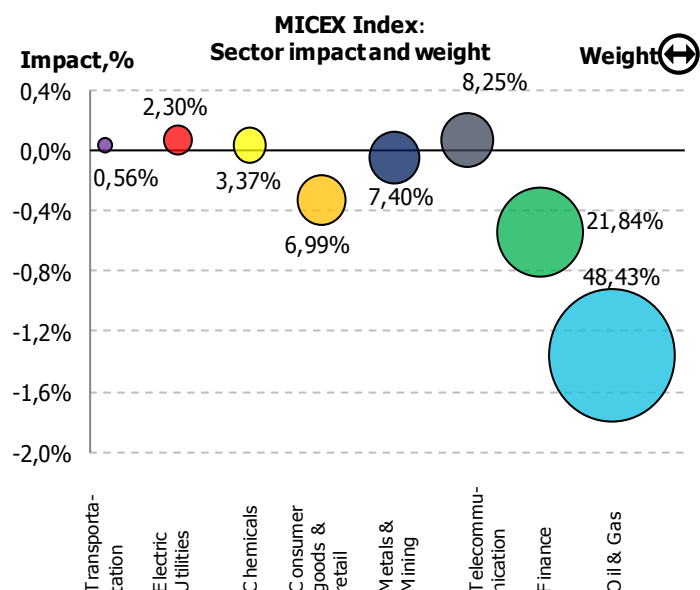
The MICEX Index's fall was due mainly to price decreases in ordinary shares of GAZPROM (down 0.59%), LUKOIL (off 0.49%), and Sberbank (down 0.46%).

The turnover of securities included in Moscow Exchange's indices was RUB 196.69 bln, and their market cap totalled RUB 20,547.82 bln.

Of the MICEX Index constituents, 34 pulled the index down (falling a total 2.43%), while 16 incurred gains (totalling 0.36%).

On the sector level, the major negative impact was from oil & gas (down 1.36%) and financials (off 0.54%).

Oil & gas accounted for 48.43% of the MICEX Index's total capitalization. The other heavily weighted sectors were financials (at 21.84%) and telecoms (at 8.25%).



RUSSIAN EQUITY AND BOND INDICES

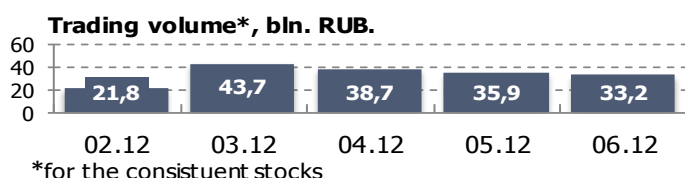
(2 - 6 December 2013)

Blue Chip Index



The Blue Chip Index fell in the week to 6 December.

It was down 2.32% WoW to 9,830.13 (from 10,064.13), off 3.75% MoM (from 10,213.95), and up 0.11% YoY (from 9,819.61).



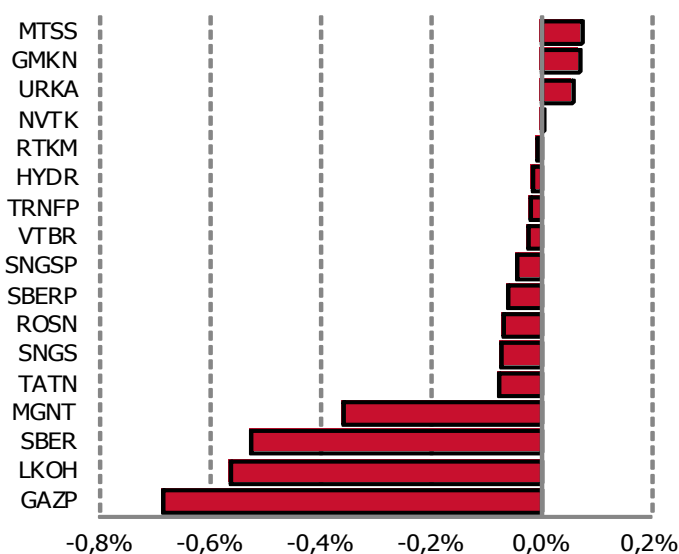
Of the 17 securities included in the Index list, 13 were pulling the Blue Chip Index down at the end of the week (falling a total 2.53%), while 4 made gains (totalling 0.21%).

The largest negative impact on the index was from prices falling for ords of GAZPROM (down 0.69%) and LUKOIL (off 0.57%).

The largest positive impact was from price gains by ords of MTS (up 0.08%) and MMC NORILSK NICKEL (up 0.07%).

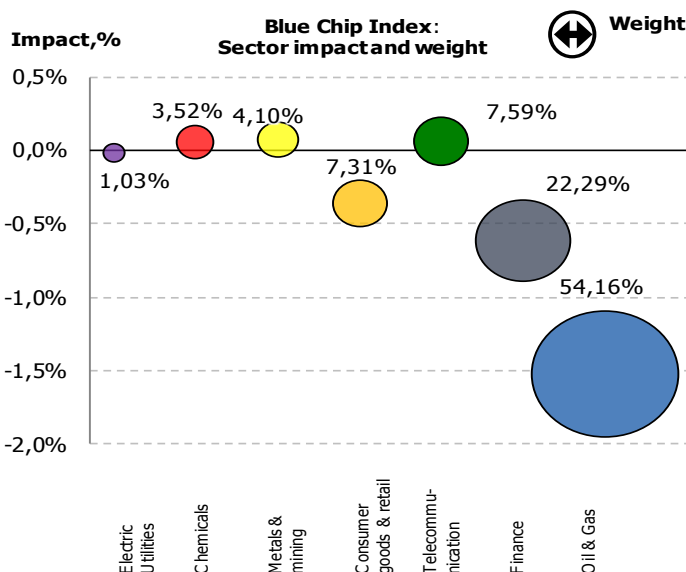
The oil & gas sector accounted for 54.16% of the Blue Chip Index's total capitalization. The other large weight sectors were financials (22.29%) and telecommunication (7.59%).

Stock price influences on Blue Chip Index



Weekly price change	Up	Down	Unchanged	Total influence, %
Number of constituents	4	13	0	17
Influence, %	+0.21%	-2.53%	0%	-2.32%

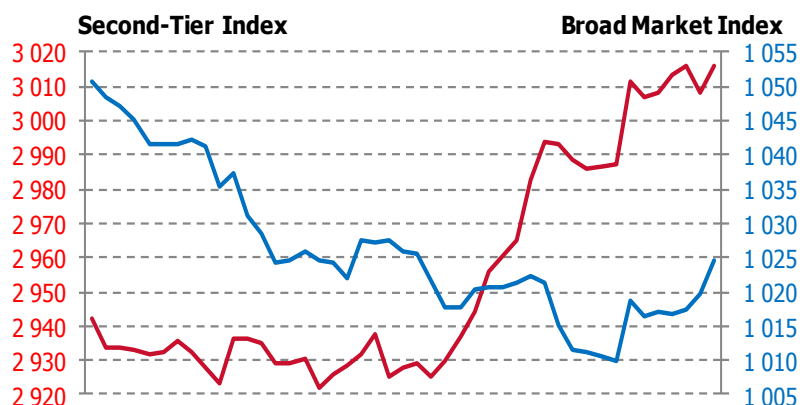
Code	Security	Weight in Blue Chip Index	Weight in MICEX Index
GAZP	Gazprom, ord	17.19%	14.85%
GMKN	Norilsk Nickel, ord	4.10%	3.54%
HYDR	Rushydro, ord	1.03%	0.89%
LKOH	Lukoil, ord	15.69%	13.56%
MGNT	Magnit, ord	7.31%	6.32%
MTSS	MTS, ord	5.47%	4.73%
NVTK	Novatek, ord	5.57%	4.81%
ROSN	Rosneft, ord	5.09%	4.40%
RTKM	Rostelecom, ord	2.12%	1.84%
SBER	Sberbank, ord	17.00%	14.69%
SBERP	Sberbank, pref	1.33%	1.15%
SNGS	Surgutneftegas, ord	3.95%	3.41%
SNGSP	Transneft, pref	2.13%	1.84%
TATN	Tatneft, ord	2.33%	2.01%
TRNFP	Transneft, pref	2.22%	1.92%
URKA	Uralkali, ord	3.52%	3.04%
VTBR	VTB, ordinary	3.95%	3.42%
Total		100.00%	86.43%



RUSSIAN EQUITY AND BOND INDICES

(2 - 6 December 2013)

Broad Market and Second Tier Indices



The Second Tier Index gained 2.43% during the week to 3,016.00 (from 2,944.53). The Broad Market Index fell 2.01% WoW to 1,024.75 (from 1,045.75).

The Second Tier Index was down 0.23% MoM (from 3,022.86) and down 6.69% YoY (from 3,232.25).

The Broad Market Index was off 3.37% MoM (from 1,060.54) and up 0.41% YoY (from 1,020.57).

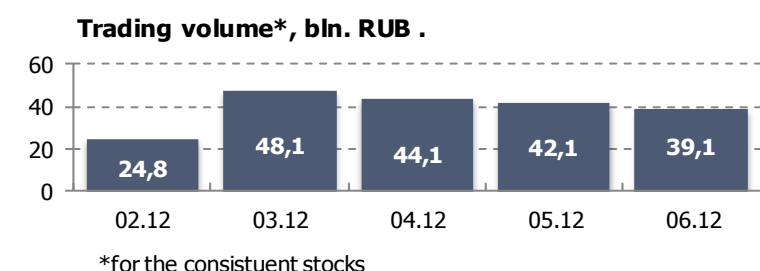
Of the 50 securities included in the Second Tier Index, 34 were pulling the index up (with gains totalling 3.68%), while 15 made losses (totalling 1.25%). One stock's prices remained flat.

The largest positive impact on the Second Tier Index was from gains by HALS-Development (up 0.63%) and Cherkizovo Group (up 0.44%).

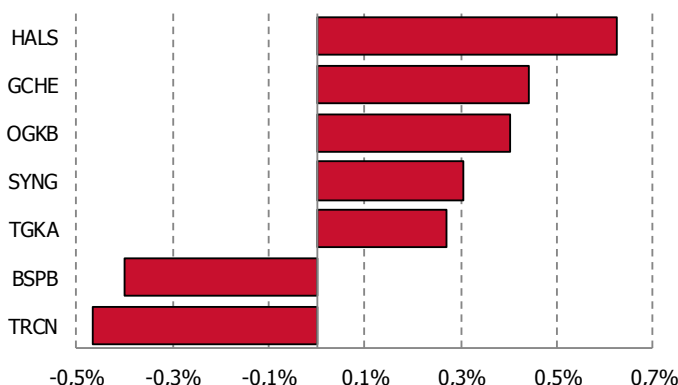
The heaviest negative impact on the Broad Market Index was from ords of GAZPROM (down 0.60%) and LUKOIL (off 0.49%).

The largest positive impact on the Second Tier Index was from electric utilities (rising 1.61%) and consumer goods & retail (up 0.87%).

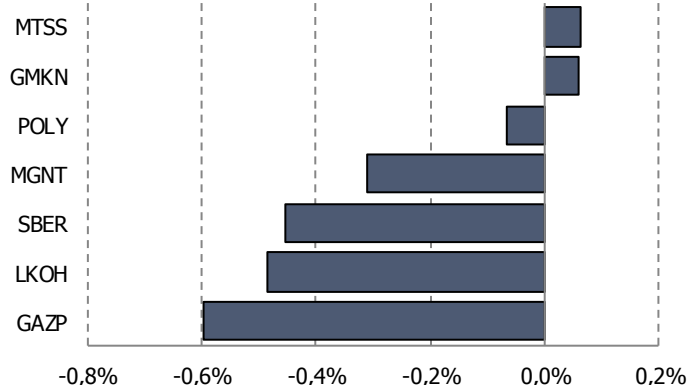
Electric utilities accounted for 28.50% of the Second Tier Index's total capitalization. The other heavily weighted sectors were consumer goods & retail (19.12%) and oil and gas (11.58%).



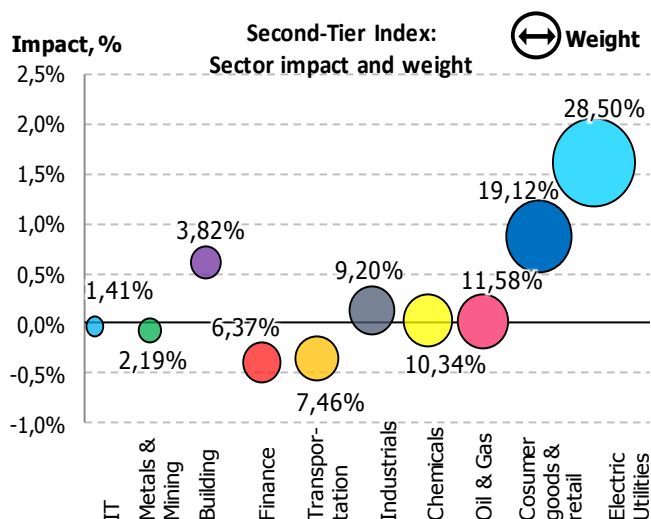
Stock price influences on Second Tier Index



Stock price influences on Broad Market Index



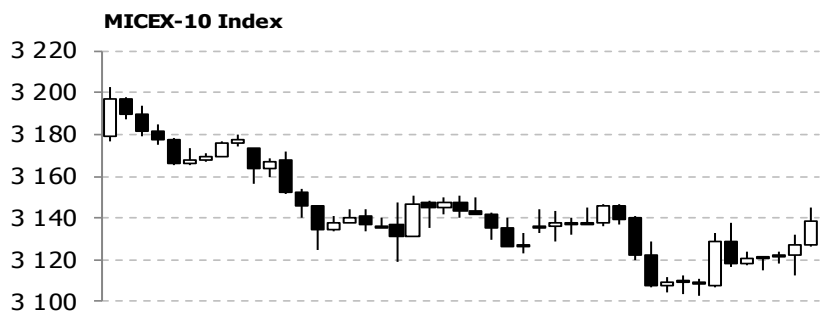
Weekly impact on indices	Up	Down	Total influence, %
Second-Tier Index	+3.68%	-1.25%	+2.43%
Broad Market Index	+0.41%	-2.42%	-2.01%



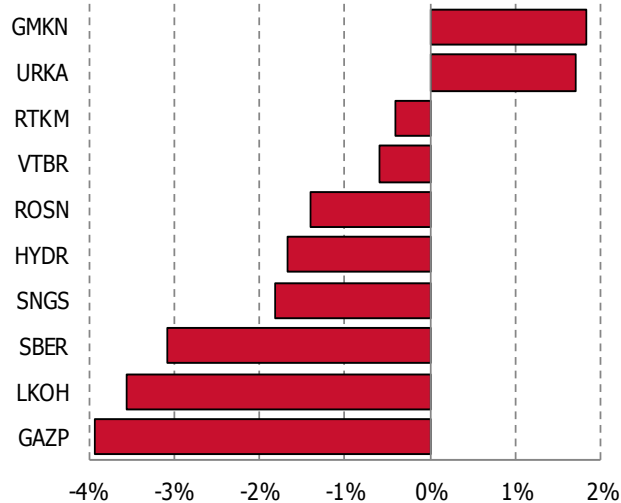
RUSSIAN EQUITY AND BOND INDICES

(2 - 6 December 2013)

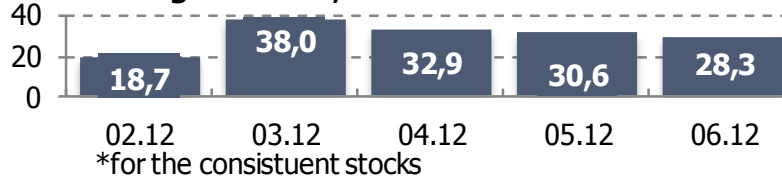
MICEX 10 Index



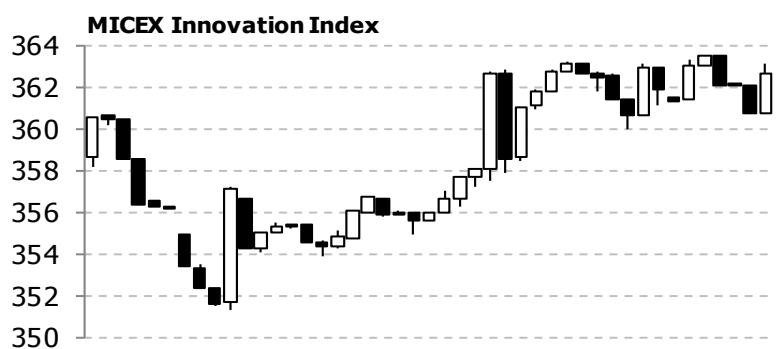
MICEX 10 stock price changes



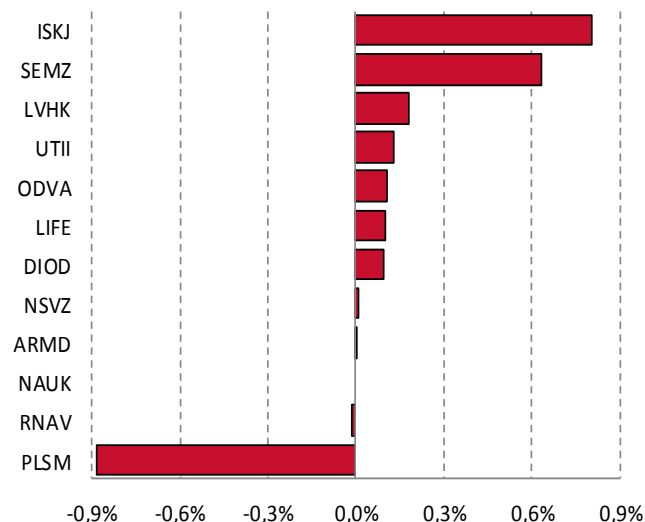
Trading volume*, bln. RUB



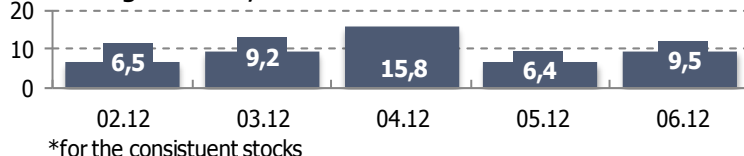
MICEX Innovation Index



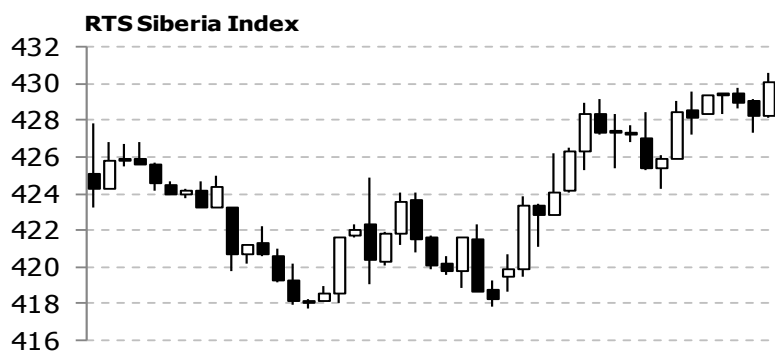
Stock price influences on MICEX Innovation Index



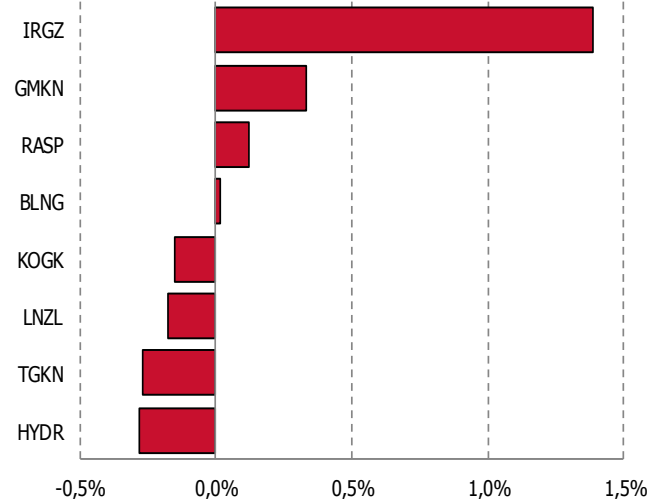
Trading volume*, mln. RUB



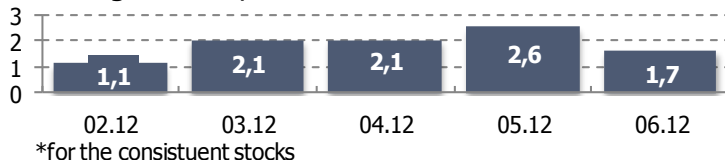
RTS Siberia Index



Stock price influences on RTS Siberia Index



Trading volume*, bln. RUB



RUSSIAN EQUITY AND BOND INDICES

(2 - 6 December 2013)

Debt market

Index	Value 06.12.2013	Return over the period			
		Week	Month	Quarter	Year
Russian Government Bond Indices					
RGBI	132.7	0.36%	-2.02%	-0.09%	-3.45%
RGBI-tr	321.77	0.48%	-1.42%	1.70%	3.78%
Yield to maturity	7.50%	10 bps	49 bps	9 bps	76 bps
Corporate Bond Indices					
MICEXCBICP	93.13	-0.10%	-0.37%	-0.22%	0.77%
MICEXCBITR	242.04	0.05%	0.27%	1.74%	9.04%
Yield to maturity	7.60%	3 bps	14 bps	-19 bps	-125 bps
Municipal Bond Indices					
MICEXMBICP	96.76	-0.19%	-0.60%	-0.54%	0.12%
MICEXMBITR	177.96	-0.03%	0.08%	1.30%	7.79%
Yield to maturity	8.05%	9 bps	24 bps	27 bps	-34 bps
Pension Indices					
Conservative	1,615.71	0.03%	0.29%	1.85%	7.87%
Moderate	1,401.33	-0.32%	-0.66%	1.58%	4.81%
Aggressive	1,197.86	-0.78%	-1.82%	1.28%	2.00%
Equity Repo Rate indicators					
Overnight	6.38%	3 bps	15 bps	36 bps	19 bps
1 week	6.15%	0 bps	-112 bps	-110 bps	26 bps
2 weeks	8.75%	214 bps	214 bps	192 bps	175 bps
Bonds Repo Rate indicators					
Overnight	6.37%	3 bps	11 bps	28 bps	-5 bps
1 week	6.97%	29 bps	91 bps	-11 bps	74 bps
2 weeks	6.81%	0 bps	8 bps	-2 bps	-11 bps

The Russian Government Bond Index RGBITR (total return) was up 0.48% to 321.77 last week (from 320.22 points on 29 November). The YTM of securities included in the calculation formula was up 10 bps to 7.50%.

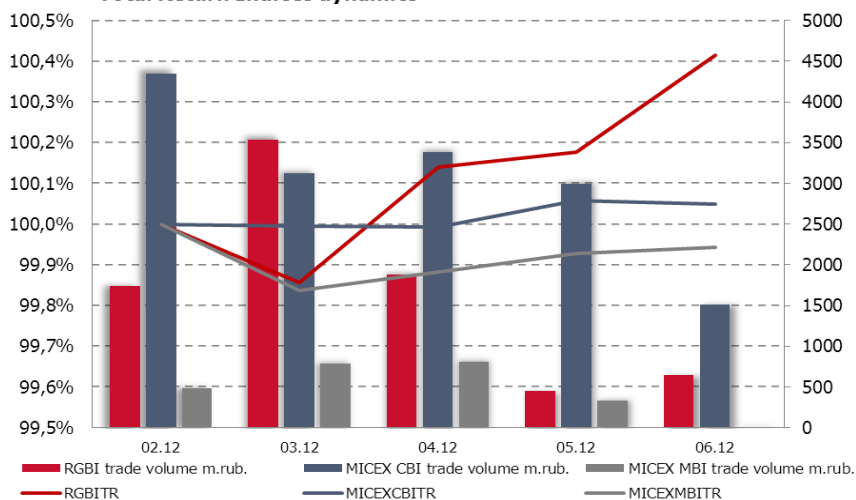
The Municipal Bond Index (MICEXMBITR, total return) was down 0.03% WoW to 177.96 points (from 178.01).

The MICEX Corporate Bond Index's MICEXCBITR total return value was up 0.05% to 242.04 points.

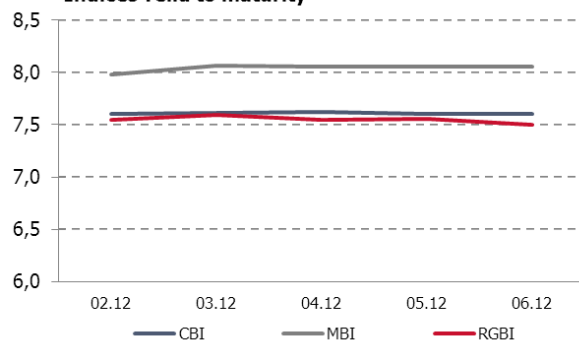
A conservative investment strategy tracking last week's pension index could have resulted in a 0.03% WoW gain. An aggressive strategy based on the pension index could have incurred a 0.78% WoW loss.

The bond overnight repo rate was up 3 bps (from 6.34% to 6.37%). The equity overnight repo rate was 6.38%.

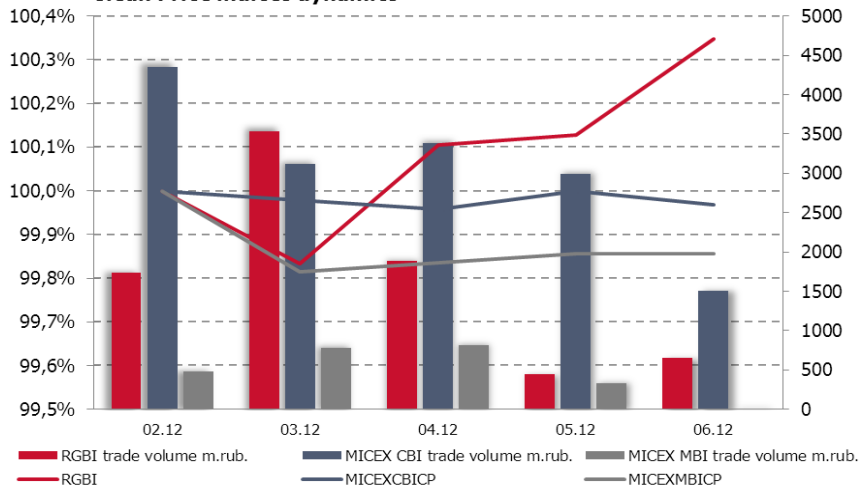
Total Return Indices dynamics



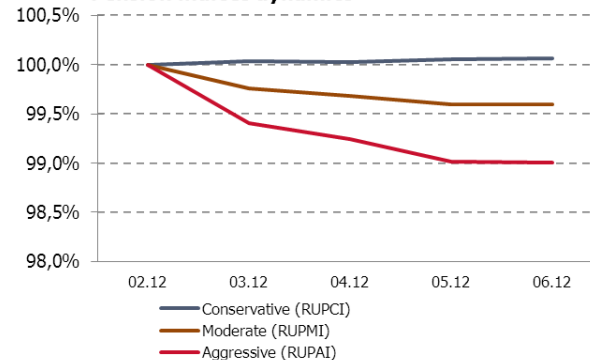
Indices Yield to maturity

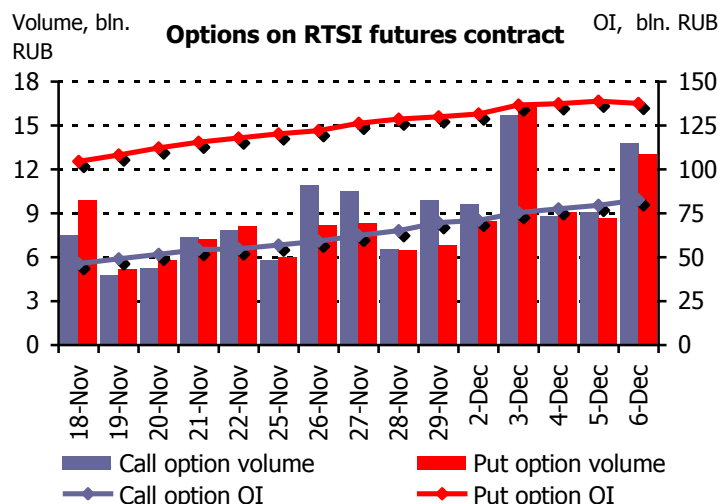
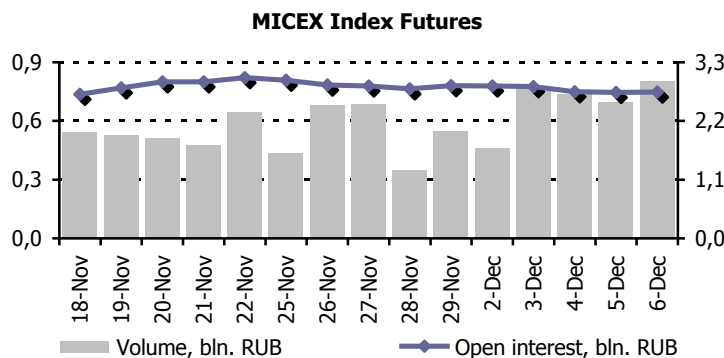
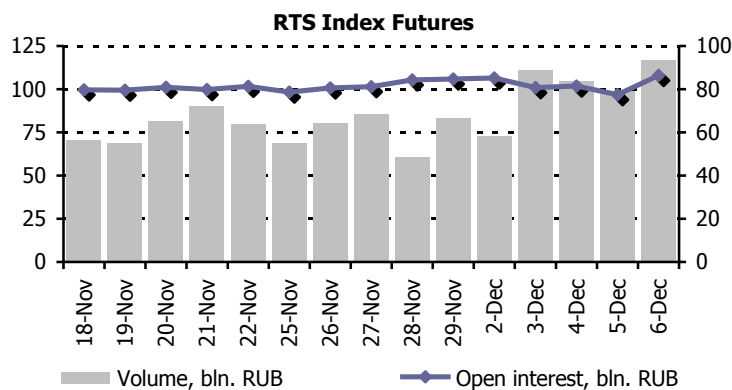
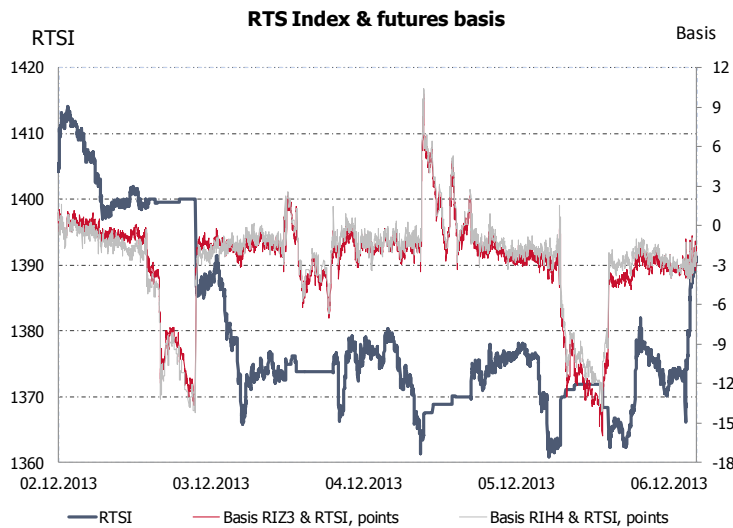


Clean Price indices dynamics



Pension indices dynamics





The total trading volume in index futures and options on Moscow Exchange's Derivatives Market in the week to 6 December was RUB 619.13 bln, or 6.77 mln contracts.

Last week's trading volume in RTS Index futures, which is the most liquid contract on FORTS, was RUB 503.17 bln, or 5.52 mln contracts.

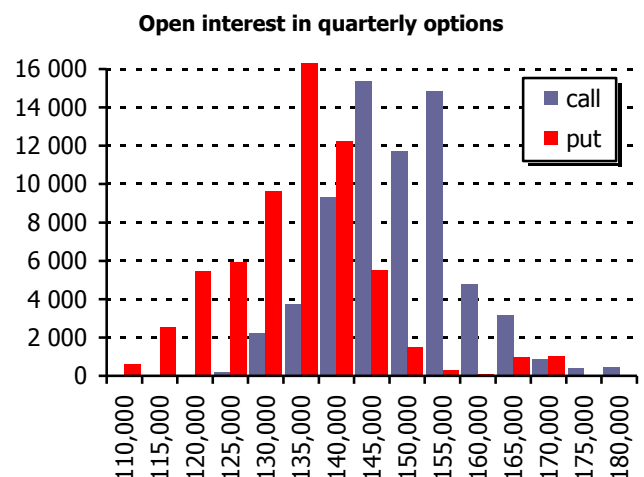
The RTS Index futures contract traded in backwardation last week. The RTS Index lost 0.88% WoW, while the December and March futures were down a respective 1.17% and 1.22%.

Open interest in RTS Index futures increased 4.30%.

Turnover in MICEX Index futures was RUB 3.47 bln, or 23,909 contracts. Open interest in MICEX Index futures decreased 1.61%.

The trading volume in options on RTS Index futures totalled RUB 112.42 bln, or 1,22 mln contracts. Open interest was RUB 220.30 bln, or 2.41 mln contracts. Puts made up 62.46% of the total open interest. The 145,000 strike calls and 135,000 strike puts had the highest open interest.

The open interest in options on RTS index futures rose 11.97%.



(2 - 6 December 2013)

Moscow Exchange's indices are key indicators of the Russian organized securities and derivatives market. The indices are capitalization-weighted. The calculation formula is based on the ratio of the total market cap of stocks included in the index to the same indicator as of the index inception date.

The MICEX and RTS Indices are Russian stock market composite indices that include the 50 most liquid stocks of the largest and most dynamically developing Russian issuers. The MICEX Index is calculated based on the stock prices denominated in RUB. The RTS Index is calculated based on the stock prices denominated in USD.

Sectoral indices are capitalisation weighted indices calculated based on prices of the most liquid local sector shares. Moscow Exchange has indices for nine sectors:

- MICEX PWR (RTSeu) comprises stocks of utilities companies.
- MICEX TLC (RTStl) comprises stocks of telecoms companies.
- MICEX M&M (RTSmm) comprises stocks of metals & mining companies.
- MICEX MNF (RTSin) comprises stocks of manufacturing companies.
- MICEX FNL (RTSfn) comprises stocks of banks and financial companies.
- MICEX CGS (RTScr) comprises stocks of consumer & retail companies.
- MICEX CHM (RTSch) comprises stocks of chemicals companies.
- MICEX TRN (RTStn) - comprises stocks of transport companies.

Values of the sectoral indices are presented in RUB and USD. MICEX sectoral indices' historical values provide historical values for rouble denominated indices, while the RTS indices' historical values provide them for dollar-denominated indices.

The Blue Chip Index is an indicator that tracks blue chips' performances. It is calculated from rouble denominated prices and bids for the 15 most liquid Russian stocks.

The MICEX10 is an unweighted price index calculated as the average of price fluctuations of 10 most liquid stocks admitted to trading on the exchange. The index tracks the increase in the value of a portfolio comprising 10 stocks with the same initial weights.

The Second-Tier Index is an indicator that tracks the performance of stocks issued by small and mid cap companies. The index includes 50 securities with free floats ranked by market cap behind the stocks in the MICEX Index and RTS Index's unified constituent list. The Index is calculated based on USD and RUB denominated stock prices.

The Broad Market Index includes the top 100 shares by liquidity, market cap, and the proportion of shares in free float. The Index's list of securities is used as the basis for the constituent list of other Moscow Exchange indices. The top 50 stocks in the Broad Market Index list are used to calculate the MICEX Index and RTS Index, and the bottom 50 to calculate the Second Tier Index. Sectoral indices baskets comprise relevant names in the Broad Market Index.

The MICEX Innovation Index is a capitalization weighted price index comprising Russian stocks traded on the Innovations and Investments Market.

Regional Indices are equity indices designed to include stocks admitted to trading on Moscow Exchange, selected based on liquidity and capitalization, with issuers operating primarily in a specific region of Russia. Information on the RTS Siberia Index, comprising stocks of companies from the Siberian federal district, is currently available.

The Russian Volatility Index is an aggregated indicator which reflects the average value of implied volatility of options on RTS Index futures. The Black Scholes model is used to calculate the index's values,.

The Bond Indices are the family of MICEX Bond Indices, consisting of the Russian Government Bond Index (RGBI), MICEX Corporate Bond Index (MICEX CBI), and MICEX Municipal Bond Index (MICEX MBI). The Indices were designed to measure the performance of the various segments of the Russian bond market. The Bond Indices are calculated by three methods concurrently: these are total return, clean price, and gross price. In addition, duration and YTM are calculated based on the index constituent lists.

The repo rate indicators are calculated to evaluate Russian organized repo market conditions. They are calculated separately for the stock and bond repo markets. Trades in shares in the MICEX Index and in bonds included on the CBR's Lombard list are used to calculate the indicators. There are overnight, one-week, and two-week repo rate indicators.

Moscow Exchange

Indices and Market Data Department
Bolshoy Kislovskiy per., 13
125009, Moscow, Russia

Phones: +7(495) 363 -3232 (ext. 24003)
Faxes: +7(495) 363 -3232 (ext. 22222)
E-mail: index@moex.com

RUSSIAN EQUITY AND BOND INDICES

(2 - 6 December 2013)

The report has been prepared and issued by Moscow Exchange. This report has been prepared and issued by MOSCOW EXCHANGE (the "Company"). Unless otherwise stated, the Company is the source for all data contained in this document. Such data is provided as at the date of this document and is subject to change without notice.

This document does not constitute or form part of, and should not be construed as, an offer or invitation for the sale or subscription of, or a solicitation of any offer to buy or subscribe for, any securities, nor shall it or any part of it or the fact of its distribution form the basis of, or be relied on in connection with, any offer, contract, commitment or investment decision relating thereto, nor does it constitute a recommendation regarding the securities of the Company.

The information in this document has not been independently verified. No rereport or warranty, express or implied, is made as to, and no reliance should be placed on, the fairness, accuracy or completeness of the information or opinions contained herein. None of the Company, or any of its subsidiaries or affiliates or any of such person's directors, officers or employees, advisers or other representatives, accepts any liability whatsoever (whether in negligence or otherwise) arising, directly or indirectly, from the use of this document or otherwise arising in connection therewith.

This report includes forward-looking statements. All statements other than statements of historical fact included in this report, including, without limitation, those regarding our financial position, business strategy, management plans and objectives for future operations are forward-looking statements. These forward-looking statements involve known and unknown risks, uncertainties and other factors, which may cause our actual results, performance, achievements or industry results to be materially different from those expressed or implied by these forward-looking statements. These forward-looking statements are based on numerous assumptions regarding our present and future business strategies and the environment in which we expect to operate in the future. Important factors that could cause our actual results, performance, achievements or industry results to differ materially from those in the forward-looking statements include, among other factors:

- Perception of market services offered by the Company and its subsidiaries
- Volatility (a) of the Russian economy and the securities market and (b) sectors with a high level of competition that the Company and its subsidiaries operate
- Changes in (a) domestic and international legislation and tax regulation and (b) state policies related to financial markets and securities markets
- Competition increase from new players on the Russian market
- The ability to keep pace with rapid changes in science and technology environment, including the ability to use advanced features that are popular with the Company's and its subsidiaries' customers
- The ability to maintain continuity of the process of introduction of new competitive products and services, while keeping the competitiveness
- The ability to attract new customers on the domestic market and in foreign jurisdictions
- The ability to increase the offer of products in foreign jurisdictions

Forward-looking statements speak only as of the date of this report and we expressly disclaim any obligation or undertaking to release any update of, or revisions to, any forward-looking statements in this report as a result of any change in our expectations or any change in events, conditions or circumstances on which these forward-looking statements are based.